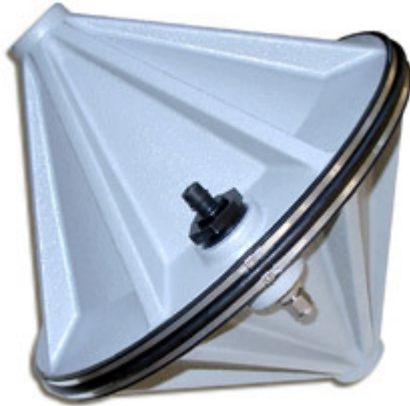


Lubell.com Presents



## Lubell LL-1424HP Underwater Acoustic Transducer

High-Power Broadband Piezoelectric Underwater  
transducer for Military and Scientific Applications

### SPECIFICATIONS

- **Frequency Range:** 200Hz - 9kHz (+/-4dB between 400Hz - 8kHz)
- **SPL:** 197dB/uPa/m @ 600Hz (80V rms applied at cable end)
- **Maximum Voltage:** 80 Vrms
- **Duty Cycle:** 100%/10A, 50%/14A
- **Impedance:** 8 ohms nominal (including AC1424HP xfmr box)
- **Depth Rating:** 6' - 40'
- **Dimensions:** 16.5" x 16.5" x 16.5"
- **Ducer/Cage Wt:** 61 lbs/air, 33 lbs/water
- **Finish:** 10-mil epoxy on MIL-C-5541 Class 1-A (transducer); 304SS cage
- **Connector:** Seacon [XSEE3BCR](#)
- **Cable:** Seacon [XSEE3CCP](#) molded to one end of 50 meter [14/3 SO cable](#) (32 lbs)
- **Data:** [Guide](#), [TVR](#), [SPL](#), [Z](#), [tabular](#)
- **Included:** [AC1424HP](#) bridging xfmr box
- **Price:** \$6925
- **Warranty:** 2 year limited
- **Amplifier:** FR2500 \$699 or CDi2000 \$1373

[lubell\\_labs@wowway.com](mailto:lubell_labs@wowway.com)

Tel: (614) 235-6740, 9:00am-5:00pm EST

[Printable PDF brochure](#)  
[Complete instructions and test data](#)

### DESCRIPTION

The LL-1424HP is a piezoelectric underwater acoustic transducer designed for general purpose military and scientific applications. The LL-1424HP may also be used as an underwater speaker when high power is required.

The LL-1424HP has a useful frequency range of 200Hz-9kHz (400Hz-8kHz +/-4dB), a maximum SPL of 197dB/uPa/m @ 600Hz w/80V rms applied, and a nominal impedance of 8 ohms. The LL1424HP is provided with an AC1424HP bridging transformer box allowing connection to amplifiers up to 2500 watts at 4 ohms bridged mono.

The LL-1424HP is built to withstand ocean environments by virtue of its 10 mil epoxy finish and cage mounting system. The LL-1424HP is fitted with a Seacon bulkhead connector and includes a mating 50 meter Seacon cable.

